

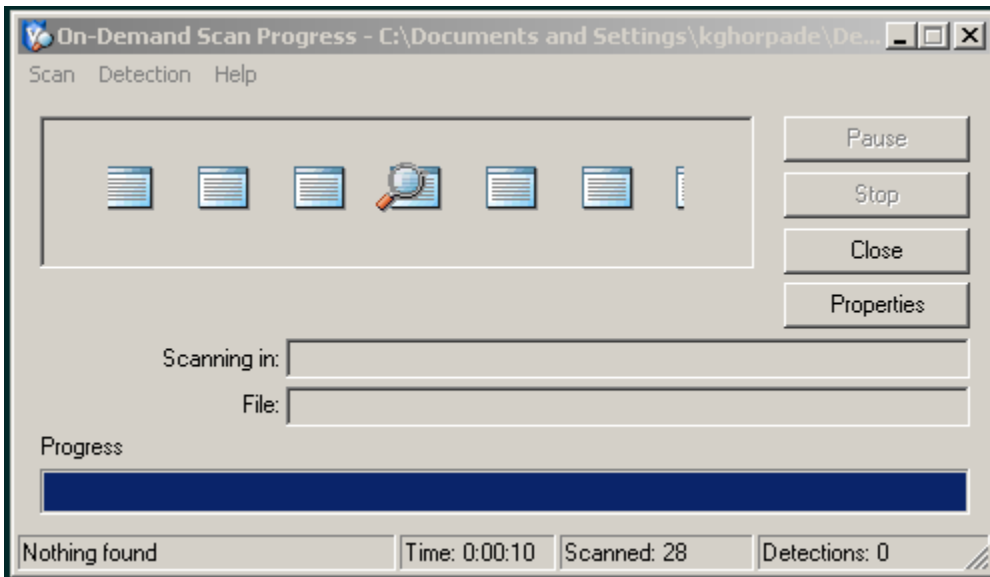
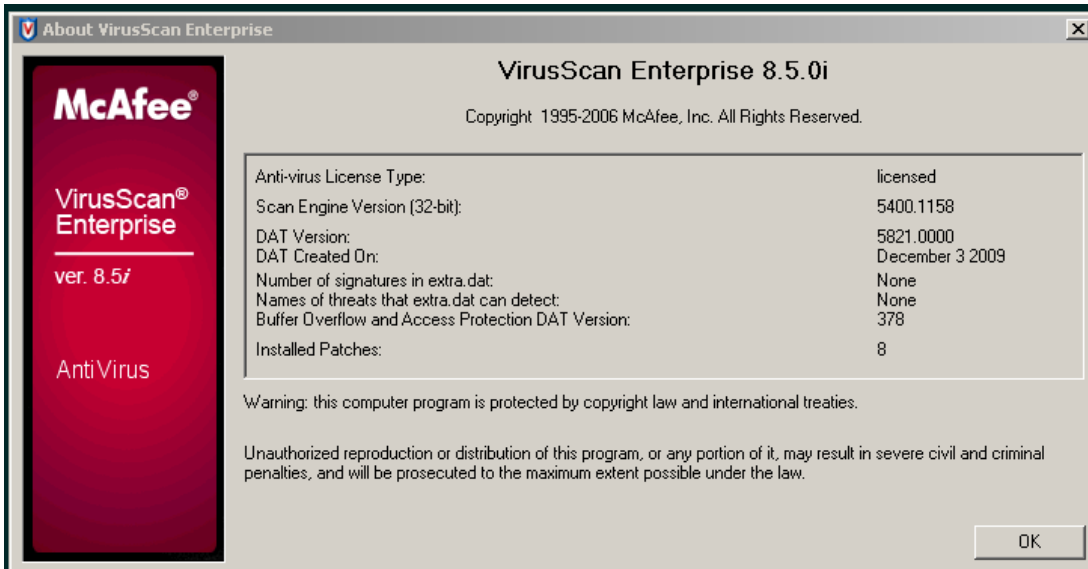


Release Notes

Date: 12/04/2009

©2009, Wyse Technology Inc.

Virus Scan Details:



Build Details:

32 MB Padded

Platform(s)	Wyse V30L & V30LE Thin Client
Version	5.0
Build number	593
Build File Name	593.0Wye84_VL30.exe
Size(Bytes)	28729344
MD5 Check sum	F8D81D1E4D77A7E3417441B341F7C4EC
Checksum32	DD20A0DC
Localization	US & International English

Platform(s)	Wyse S30 Thin Client (ROHS & Non-ROHS)
Version	5.0
Build number	593
Build File Name	593.0Wye95_C30.exe
Size(Bytes)	26988544
MD5 Check sum	6ACF0742B22BCC7F7EC5A68774C1E2C7
Checksum32	CFE29786
Localization	US & International English

64 MB Padded

Platform(s)	Wyse V30L & V30LE Thin Client
Version	5.0
Build number	593
Build File Name	593.0Wye88_VL30.exe
Size(Bytes)	29700096
MD5 Check sum	24FA526C9CACCD95A0152DFB261AB264
Checksum32	E4A1B892
Localization	US & International English

Platform(s)	Wyse S30 Thin Client (ROHS)
Version	5.0
Build number	593
Build File Name	593.0Wye98_C30.exe
Size(Bytes)	27955200
MD5 Check sum	D79D2343F581C93651D7D878DAEB397F
Checksum32	D740B9F0
Localization	US & International English

Bios Details:

Platform	Wyse V30L & V30LE Thin Client
Version	1.14
Build number	N/A
Build File Name	vl_ce.rom
Size(Bytes)	524288 bytes
MD5 Check sum	649F8338117F9B096DBB949C1A256FED
Checksum32	4DCBE00

Platform	Wyse S30 Thin Client (ROHS & Non-ROHS)
Version	1.15
Build number	N/A
Build File Name	sat_ce.rom
Size(Bytes)	262144 bytes
MD5 Check sum	E2CB7055E70372AE5D47D5975268E6AD
Checksum32	16BBFA9

Boot Sequence (as appearing in the BIOS):

Wyse V30L & V30LE Thin Client

- 1st Boot : Hard Disk
- 2nd Boot : USB FDD
- 3rd Boot : LAN

Wyse S30 Thin Client (ROHS & Non-ROHS))

- 1st Boot : IDE
- 2nd Boot : USB
- 3rd Boot : PXE

Add-on details:

Chart 1-a: List of Add-ons available in the 32 MB padded image.

The following add-ons are part of the padded image.

Wyse V30L & V30LE Thin Client

Add-on	Build Number
Edgeport	0018
Atheros	0002
CERTIFICATES	00140004
ERICOM	0033
ICA10	00980011

IE	00610015
JetCet	0044
Ms-Storage	00310009
Hagent	0114
RDP	00610015
Remote Shadow	0031
SCRLOCK	00170003
SCRSaver	00080002
ScrLock ICAVC	0006
SNMP	00310009
USB to Serial	0014
USB Modem	0005
Via Wlan	00050001
ViaDisablePXE	0003

Wyse S30 Thin Client (ROHS & Non-ROHS)

Add-ons	Build Number
AMDDisablePXE	0001
Certificates	00140004
EdgePort21	0018
Ericom	0033
Hagent	0114
IE	00610015
ICA10	00980011
JetCET	0044
Mass Storage	00310009

RDP	00610015
Remote Shadow	0031
Screen Lock	00170003
Screen Lock ICAVC	0006
Screen Saver	00080002
SNMP	00310009
USB to Serial	0014
USB Modem	0005

Chart 1-b: List of Add-ons available in the 64 MB padded image.

The following add-ons are part of the padded image.

Wyse V30L & V30LE Thin Client

Add-on	Build Number
Edgeport	0018
Atheros	0002
CERTIFICATES	00140004
ERICOM	0033
ICA10	00980011
IE	00610015
JetCet	0044
Ms-Storage	00310009
Hagent	0114
RDP	00610015
Remote Shadow	0031
SCRLOCK	00170003

SCRSaver	00080002
ScrLock ICAVC	0006
SNMP	00310009
USB to Serial	0014
USB Modem	0005
Via Wlan	00050001
ViaDisablePXE	0003
PCSC_DRIVER	26
PPPoE	12.2
PPTP	23.2
DIALUP	24.3
ELOTOUCH	18
ELOTOUCHUSB	12

Wyse S30 Thin Client (ROHS)

Add-ons	Build
AMDDisablePXE	0001
Certificates	00140004
EdgePort21	0018
Ericom	0033
Hagent	0114
IE	00610015
ICA10	00980011
JetCET	0044
Mass Storage	00310009
RDP	00610015
Remote Shadow	0031

Screen Lock	00170003
Screen Lock ICAVC	0006
Screen Saver	00080002
SNMP	00310009
USB to Serial	0014
USB Modem	0005
PCSC_DRIVER	26
PPPoE	12.2
PPTP	23.2
DIALUP	24.3
ELOTOUCH	18
ELOTOUCHUSB	12

Chart 1-a: List of new Add-ons available in the 64 MB padded image.

Application	Add-on or s/w Filename	Version	Build Number	Size (Bytes)	Checksum32	MD5
PCSC_DRIVER	PCSC_DRIVER	3.0	26	414892	1FF1020	6748549C047F06DF172A6F94222691DD
PPPoE	PPPoE	1.0	12.2	280792	E5ADC5	708A197C69078DCCC5033FEED97DBB7C
PPTP	PPTP	1.1	23.2	248880	DC3601	B70EBDEE3035679A8D39DCD3D1878EAE
DIALUP	DIALUP	2.1	24.3	260408	107CD5E	0A19BE1FF5065C8A5BBE970EC0A4745A
ELOTOUCH	ELOTOUCH	1.0	18	61652	2E3224	1BA800BF727B0CE4EB99EE2CBA497624
ELOTOUCHUSB	ELOTOUCHUSB	2.0	12	82508	502DD3	F5085AA8AD04E4755835A9D7818E770A

Chart 2-a: List of Add-ons not included in the 32 MB Padded image.

The following add-ons are available separately and are not included in the padded Image. These add-ons are being release with new build number.

Application	Add-on or s/w Filename	Version	Build Number	Size (Bytes)	Checksum32	MD5
PCSC_DRIVER	PCSC_DRIVER	3.0	26	414892	1FF1020	6748549C047F06DF172A6F94222691DD
PPPoE	PPPoE	1.0	12.2	280792	E5ADC5	708A197C69078DCCC5033FEED97DBB7C
PPTP	PPTP	1.1	23.2	248880	DC3601	B70EBDDEE3035679A8D39DCD3D1878EAE
DIALUP	DIALUP	2.1	24.3	260408	107CD5E	0A19BE1FF5065C8A5BBE970EC0A4745A
ELOTOUCH	ELOTOUCH	1.0	18	61652	2E3224	1BA800BF727B0CE4EB99EE2CBA497624
ELOTOUCHUSB	ELOTOUCHUSB	2.0	12	82508	502DD3	F5085AA8AD04E4755835A9D7818E770A

Other Major OS components (if applicable):

- Support LDAP Authentication (Requires LDAP-Auth add-on).
- Support ICA 10.x client.
- Wide range of USB mass-storage devices supported.
- WPA2 compliant wireless Access Points via supported wireless adaptors.
- The system is padded with a new add-on to support internal wireless (VIA VT 6656 Internal Wireless Adapter)
- RDP 5.5
- Jetcet 4.x
- VNC support in CE 5.0
- Same image to support both V30L and V30LE platform.

The following resolutions are available in this build:

V30L & V30LE:

- Best Available Using DDC
- 640x480
- 800x600
- 1024x768
- 1280x768
- 1280x960
- 1280x1024
- 1440x900 (Not Tested- Monitor not available.)
- 1680x1050
- 1600x1200
- 1920x1080
- 1920x1200
- 1920x1440 (Available only in CRT mode)

S30 (ROHS & Non-ROHS):

- Best Available Using DDC
- 640x480

- 800x600
- 1024x768
- 1152x864
- 1280x1024
- 1440x900 (Not Tested- Monitor not available.)
- 1600x1200 (Available only with 8 bit and 16 bit of color quality)
- 1680x1050 (Available only with 8 bit and 16 bit of color quality)